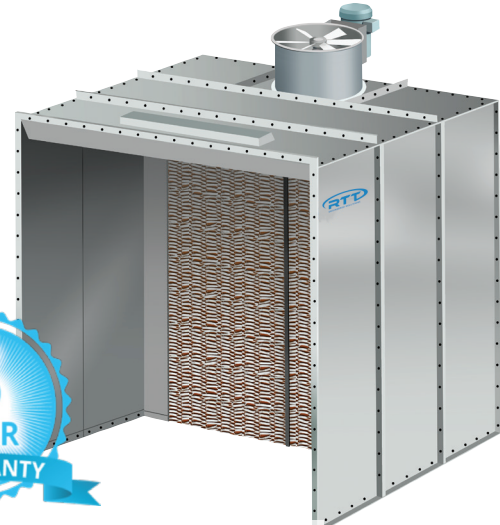


OPEN FRONT BOOTH



Designed for both batch and conveyORIZED production systems, RTT's Open Front Booths offer a safe environment for any type of finishing operation. Air flows in the open front of the booth, passes through the booth's working area, and into the filtered exhaust chamber located in the rear of the booth. This filtered exhaust air is drawn through the exhaust plenum and discharged upward into the atmosphere through the exhaust stack. To make efficient use of your valuable floor space, RTT's Industrial Booths are available in a range of standard sizes to accommodate your finishing needs. Custom sizes and designs are available to accommodate site specific needs including conveyor and crane slots/openings.

RTT's booths are easy to install and simple to maintain. The quality and workmanship of RTT's spray booths allow us to offer a 5-year warranty when using high performance W-Series RP Arrestor exhaust filters manufactured by RTT.



Booth Features

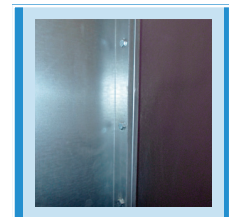
- RTT booths are constructed from heavy duty 18-gauge, prime quality galvanized steel and engineered with corresponding support structure.
- All panels and support members are laser cut and precision formed for consistent fit allowing for easy nut and bolt assembly.
- RTT booths ship with industry leading E-Light LED lighting which provides lower energy usage, exceptionally longer life, truer color rendering, reduced maintenance costs and includes a 5-year warranty.
- LED lighting is constructed of 22-gauge steel which is powder coated white, and available in 4000 and 8000 lumen models. E-Lights are ETL listed for US and Canada with Class 1 Division 2, Group A, B, C, D and Class 2 division 2, Group F and G ratings.
- High efficiency W-Series RP Paint Arrestor blanket media ships with every booth for extended life, increased depth loading and holding capacity. The blanket filters are secured in place with RTT FilterLoc technology which provides a tighter seal to the booth eliminating overspray bypass while providing quick and easy filter change outs.
- All RTT booths utilize efficient and quality brand-name tube-axial fans and motors.
- Air solenoid valve Interlocked to the exhaust fan and air supply for the spray application equipment is also included.
- RTT booths meet and/or exceed quality performance standards and all applicable OSHA and NFPA regulations.



Optional UL & ETL listed control panel



Air solenoid valve



5/16" bolts with serrated lock nut



Industry-leading LED lighting with 5-year warranty

Booth Options

- Air Make-up Units (AMU's) and intake chambers
- Filtration options including: 2-Stage, 3-stage, NESHAP
- Reduced and or variable air flows for automatic spray operations
- Durable powder coated white
- Control panel and other electrical components can be purchased separately
- Conveyor and crane slots/openings
- Roll-up, bifold or trifold doors
- Exhaust ductwork

OPEN FRONT BOOTH



Selecting a Booth Size

RTT can design and build spray booths in a variety of sizes and configurations. Although our team can engineer a custom booth to fit your needs, below are standard sizes that are quickly available to you.

| Model Number | Interior Dimensions | | | Exterior Dimensions | | | Qty. Lights | Fan Diameter | Fan HP | SCFM @ 1/2" SP | Shipping Weight |
|-------------------|---------------------|----------|----------|---------------------|----------|--------|-------------|--------------|--------|----------------|-----------------|
| | Width | Height | Length | Width | Height | Length | | | | | |
| IB-04-07-05-00-S* | 4'-0" | 7'-0" | 5'-0" | 4'-4" | 7'-2" | 7'-2" | 0 | 18" | .75HP | 3,500 | 675 |
| IB-06-07-05-00-S* | 6'-0" | 7'-0" | 5'-0" | 6'-4" | 7'-2" | 7'-8" | 1 | 24" | 1HP | 5,250 | 940 |
| IB-08-07-05-00-S* | 8'-0" | 7'-0" | 5'-0" | 8'-4" | 7'-2" | 7'-8" | 1 | 24" | 2HP | 7,150 | 1,240 |
| IB-10-07-05-00-S* | 10'-0" | 7'-0" | 5'-0" | 10'-4" | 7'-2" | 8'-2" | 2 | 30" | 2HP | 8,750 | 1,630 |
| IB-12-07-07-00-S* | 12'-0" | 7'-0" | 7'-0" | 12'-4" | 7'-2" | 10'-2" | 2 | 30" | 3HP | 10,500 | 1,870 |
| IB-14-07-07-00-S* | 14'-0" | 7'-0" | 7'-0" | 15'-0" | 7'-6" | 10'-8" | 2 | 30" | 3HP | 12,250 | 2,450 |
| IB-16-07-07-00-S* | 16'-0" | 7'-0" | 7'-0" | 17'-0" | 7'-6" | 10'-8" | 2 | 30" | 5HP | 14,000 | 2,650 |
| IB-18-07-07-00-S* | 18'-0" | 7'-0" | 7'-0" | 19'-0" | 7'-6" | 11'-8" | 3 | 36" | 5HP | 15,750 | 3,000 |
| IB-20-07-07-00-S* | 20'-0" | 7'-0" | 7'-0" | 21'-0" | 7'-6" | 11' | 4 | 36" | 5HP | 17,500 | 3,000 |
| | | | | | | | | | | | |
| IB-04-08-05-00-S* | 4'-0" | 8'-0" | 5'-0" | 4'-4" | 8'-2" | 7'-2" | 0 | 18" | .75HP | 4,000 | 703 |
| IB-06-08-05-00-S* | 6'-0" | 8'-0" | 5'-0" | 6'-4" | 8'-2" | 7'-8" | 1 | 24" | 1.5HP | 6,000 | 1,020 |
| IB-08-08-05-00-S* | 8'-0" | 8'-0" | 5'-0" | 8'-4" | 8'-2" | 7'-8" | 1 | 24" | 3HP | 8,000 | 1,490 |
| IB-10-08-05-00-S* | 10'-0" | 8'-0" | 5'-0" | 10'-4" | 8'-2" | 8'-2" | 2 | 30" | 3HP | 10,000 | 1,780 |
| IB-12-08-07-00-S* | 12'-0" | 8'-0" | 7'-0" | 12'-4" | 8'-2" | 10'-2" | 2 | 30" | 3HP | 12,000 | 2,270 |
| IB-14-08-07-00-S* | 14'-0" | 8'-0" | 7'-0" | 15'-0" | 8'-6" | 10'-8" | 2 | 30" | 5HP | 14,000 | 2,600 |
| IB-16-08-07-00-S* | 16'-0" | 8'-0" | 7'-0" | 17'-0" | 8'-6" | 11'-8" | 2 | 36" | 5HP | 16,000 | 2,810 |
| IB-18-08-07-00-S* | 18'-0" | 8'-0" | 7'-0" | 19'-0" | 8'-6" | 11'-8" | 3 | 36" | 5HP | 18,000 | 3,150 |
| IB-20-08-07-00-S* | 20'-0" | 8'-0" | 7'-0" | 21'-0" | 8'-6" | 11'-8" | 4 | 42" | 5HP | 20,000 | 3,690 |
| | | | | | | | | | | | |
| IB-04-10-05-00-S* | 4'-0" | 10'-0" | 5'-0" | 4'-4" | 10'-2" | 7'-2" | 0 | 18" | 1.5HP | 5,000 | 1,100 |
| IB-06-10-05-00-S* | 6'-0" | 10'-0" | 5'-0" | 6'-4" | 10'-2" | 7'-8" | 1 | 24" | 2HP | 7,500 | 1,650 |
| IB-08-10-05-00-S* | 8'-0" | 10'-0" | 5'-0" | 8'-4" | 10'-2" | 8'-2" | 1 | 30" | 3HP | 10,000 | 1,900 |
| IB-10-10-05-00-S* | 10'-0" | 10'-0" | 5'-0" | 10'-4" | 10'-2" | 8'-2" | 2 | 30" | 3HP | 12,500 | 2,350 |
| IB-12-10-07-00-S* | 12'-0" | 10'-0" | 7'-0" | 12'-4" | 10'-2" | 10'-2" | 2 | 30" | 5HP | 15,000 | 2,500 |
| IB-14-10-07-00-S* | 14'-0" | 10'-0" | 7'-0" | 15'-0" | 10'-6" | 11'-8" | 2 | 36" | 5HP | 17,500 | 3,000 |
| IB-16-10-07-00-S* | 16'-0" | 10'-0" | 7'-0" | 17'-0" | 10'-6" | 11'-8" | 2 | 42" | 5HP | 20,000 | 3,400 |
| IB-18-10-07-00-S* | 18'-0" | 10'-0" | 7'-0" | 19'-0" | 10'-6" | 11'-8" | 3 | 42" | 5HP | 22,500 | 4,000 |
| IB-20-10-07-00-S* | 20'-0" | 10'-0" | 7'-0" | 21'-0" | 10'-6" | 11'-8" | 4 | 42" | 7.5HP | 25,000 | 4,400 |
| | | | | | | | | | | | |
| IB-04-12-05-00-S | 4'-0" | 12'-0" | 5'-0" | 4'-4" | 12'-2" | 7'-8" | 0 | 24" | 1.5HP | 6,000 | 975 |
| IB-06-12-05-00-S* | 6'-0" | 12'-0" | 5'-0" | 6'-4" | 12'-2" | 7'-8" | 1 | 24" | 3HP | 9,000 | 1,500 |
| IB-08-12-05-00-S* | 8'-0" | 12'-0" | 5'-0" | 8'-4" | 10'-2" | 8'-2" | 1 | 30" | 3HP | 12,000 | 1,700 |
| IB-10-12-05-00-S* | 10'-0" | 12'-0" | 5'-0" | 10'-4" | 12'-2" | 8'-2" | 2 | 30" | 5HP | 15,000 | 2,200 |
| IB-12-12-07-00-S* | 12'-0" | 12'-0" | 7'-0" | 12'-4" | 12'-2" | 11'-2" | 2 | 36" | 5HP | 18,000 | 2,500 |
| IB-14-12-07-00-S* | 14'-0" | 12'-0" | 7'-0" | 15'-0" | 12'-6" | 11'-8" | 2 | 42" | 5HP | 21,000 | 3,200 |
| IB-16-12-07-00-S* | 16'-0" | 12'-0" | 7'-0" | 17'-0" | 12'-6" | 11'-8" | 2 | 42" | 7.5HP | 24,000 | 3,500 |
| IB-18-12-07-00-S* | 18'-0" | 12'-0" | 7'-0" | 19'-0" | 12'-6" | 11'-8" | 3 | 42" | 7.5HP | 27,000 | 4,100 |
| IB-20-12-07-00-S* | 20'-0" | 12'-0" | 7'-0" | 21'-0" | 12'-6" | 11'-8" | 4 | 42" | 10HP | 30,000 | 4,700 |
| Ref. Key | A | B | C | | D | | | | | | |

*Booths ship in less than 10 days.
ONLY for these items without any modifications.
Any additional items on the order may impact lead time.
Contact your RTT representative for more information.

